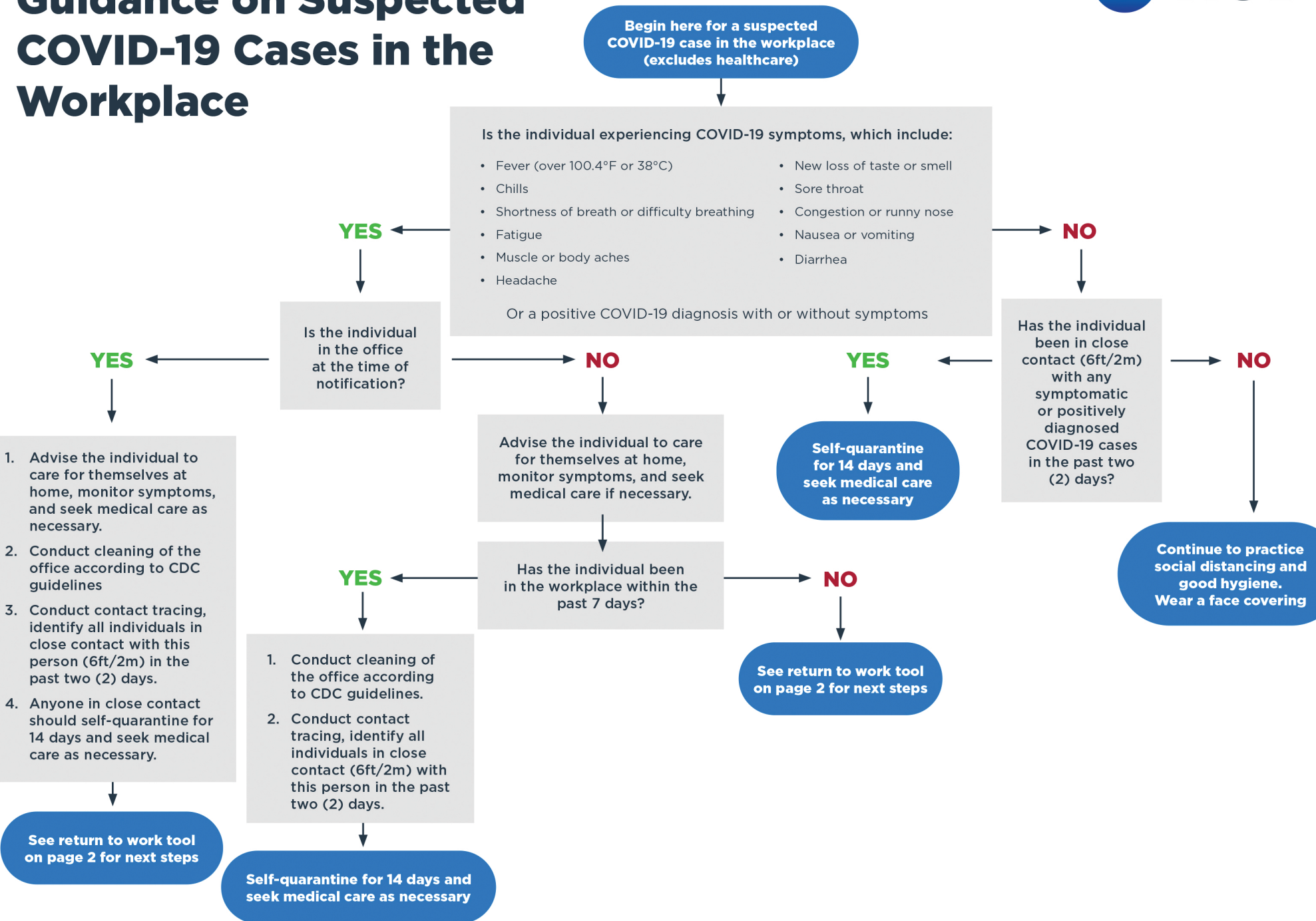
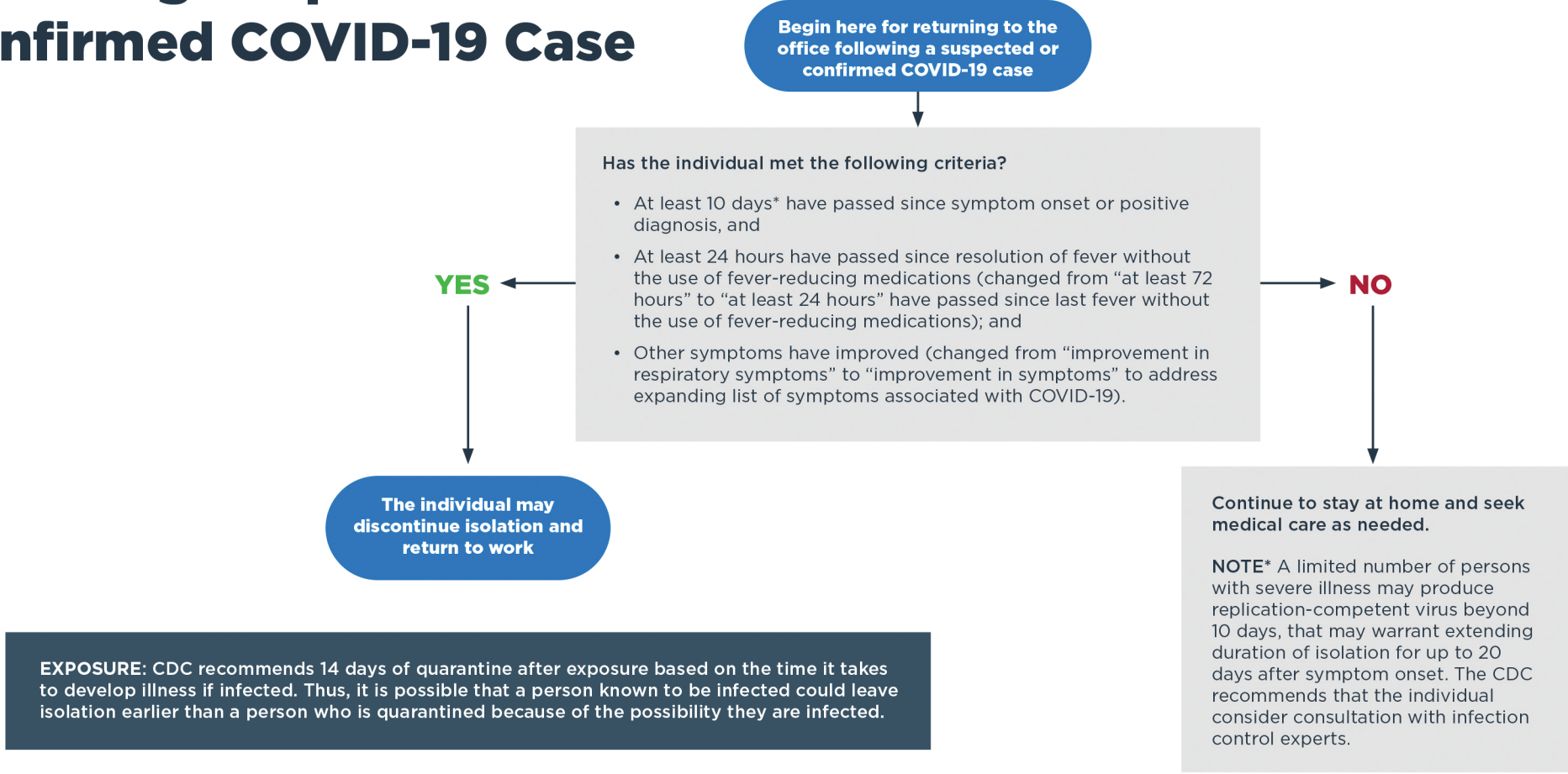


# Guidance on Suspected COVID-19 Cases in the Workplace



# Returning to the Office Following Suspected or Confirmed COVID-19 Case



The information contained in this tool is based upon current CDC guidance and is subject to change. For the most up to date information, please visit: <https://www.cdc.gov/coronavirus/2019-ncov/index.html>

Disclaimer: Neither Hub International Limited nor any of its affiliated companies is a law or accounting firm, and therefore they cannot provide legal or tax advice. The information herein is provided for general information only, and is not intended to constitute legal or tax advice as to an organization's specific circumstances. It is based on Hub International's understanding of the law as it exists on the date of this publication. Subsequent developments may result in this information becoming outdated or incorrect and Hub International does not have an obligation to update this information. You should consult an attorney, accountant, or other legal or tax professional regarding the application of the general information provided here to your organization's specific situation in light of your organization's particular needs.